



*YOUR GEAR*



eLECTRIFIED  
eMOTION  
@VITARA

SUZUKI  
**Safety Support**  
Preventive safety technology

**SCAN HERE**  
FOR FURTHER  
PRODUCT INFORMATION



PROGRESS IS THE ROAD WE'VE NEVER STOPPED TAKING



**DYNAMIC DESIGN TO CATCH YOUR EYE  
MADE FOR EVERY MOMENT ON THE ROAD**



# Charging, Designed for Convenience

The e VITARA charging port is seamlessly positioned on the front left fender, designed for easy access and everyday convenience. Target charging performance is outlined below:

DC Fast Charging: 50 minutes (15-80%)

AC Standard Charging: 9,5 hours using a 1-phase 7kW, 230V/32A power supply (15-100%)

\*Charging time may vary depending on ambient temperature.



Mandatory parts are already included on the vehicle

## Battery & Range

The e VITARA Battery is designed to ensure stable and reliable performance, the battery pack features advanced thermal management and a variety of built-in safeguards against overheating and short circuits, such as liquid cooling, individual battery cells each contained in separate chamber, and battery voltage monitoring.



BATTERY CAPACITY	61 kWh
MAX. POWER	128 kW
MAX. TORQUE	193 N.m
RANGE	426 km*

\*Based on WLTP (Worldwide Harmonized Light Vehicle Test Procedure) calculation



\*\*Terms & conditions applied



# Driving Engineered Control, Confident Performance

## Shift-by-Wire Driving Mode.

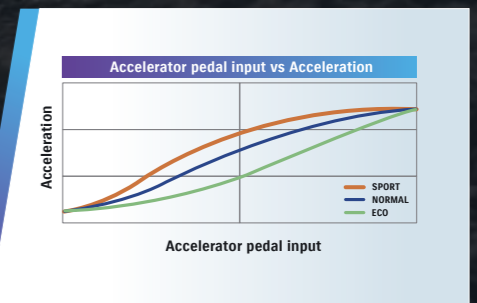
The e VITARA is equipped with an all-new shift-by-wire system that electrically switches driving modes at the turn of a dial. In addition, switches for other driving mode functions are located close to the dial for easy fingertip operation.



Mode type	Mode Name
Driving mode	ECO NORMAL SPORT
Pedal mode	Easy operation pedal
SNOW mode	SNOW

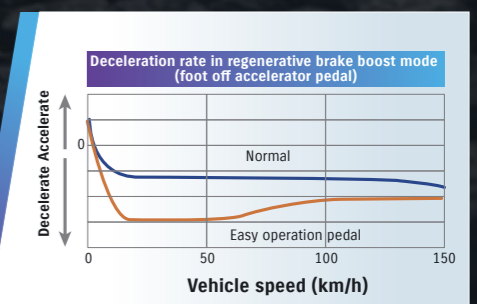
## Driving Mode.

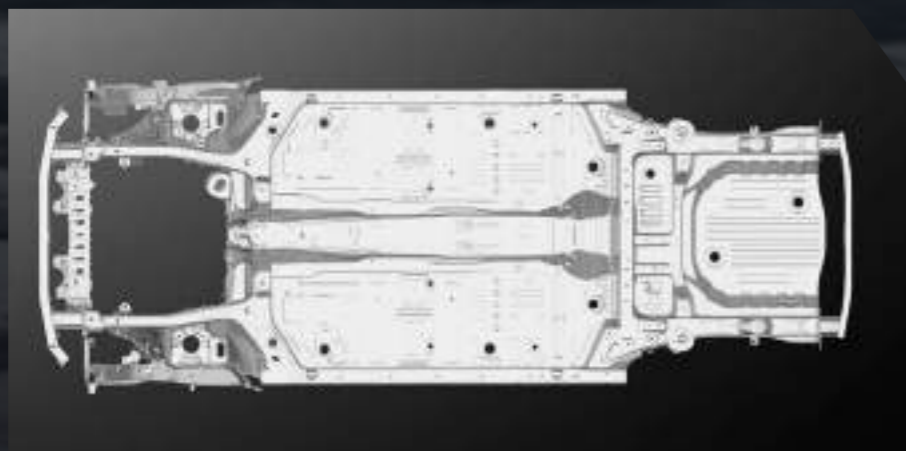
Three driving modes are offered. Eco extends cruising range by regulating air conditioner power consumption and acceleration response to accelerator pedal input. Normal provides optimal power delivery for ordinary driving. Sport provides quicker response to accelerator pedal input for an agile and powerful driving experience. The currently selected drive mode is shown at the bottom of the meter display.



## Pedal Mode.

Pedal mode's easy operation pedal allows drivers to choose the level of deceleration that results when they ease off the accelerator pedal. Three levels of deceleration are offered, with higher settings providing greater deceleration that enhances the driver's ability to regulate speed with the accelerator pedal alone.

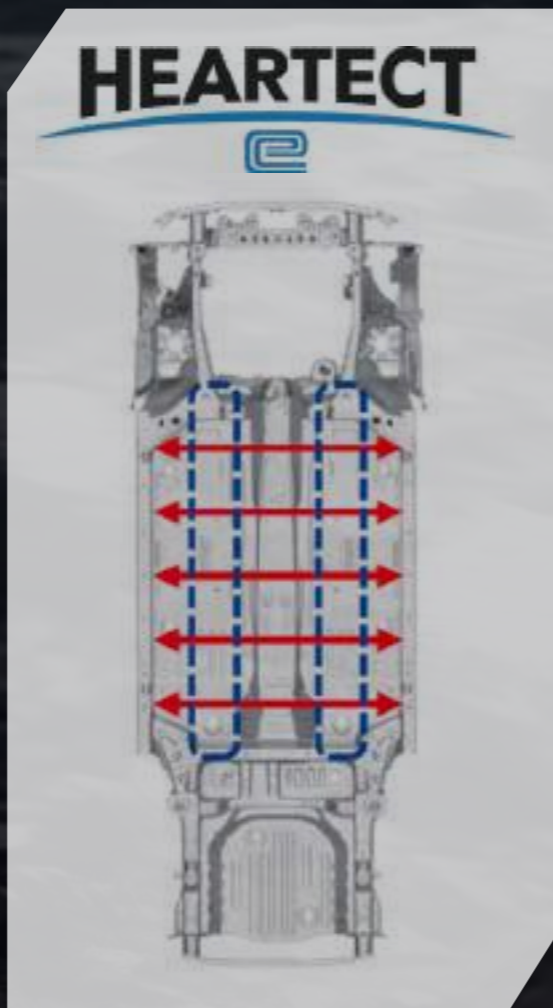




### HEARTECT-e platform

Developed exclusively for The e VITARA, the new Heartect-e platform maximizes driving range and cabin space. The front underbody structure enables a shorter front overhang while distributing collision energy across multiple load paths.

In the main floor area, the underfloor frame is eliminated to position the high-voltage battery beneath the floor, complemented by energy-absorbing side mounts and protective frames to enhance side-impact protection. The rear floor area is also engineered to help safeguard the battery. The front overhang is shorter than Vitara and comparable to Swift, while the rear overhang is also reduced.



### Grille Shutter

The front grille shutter contributes to improved driving range. It automatically opens and closes to optimize airflow in response to driving conditions.



Grille Shutter Open (provides cooling airflow to components when required)



Grille Shutter Closed (prevents air intake and enhances aerodynamic performance)



### eAxle

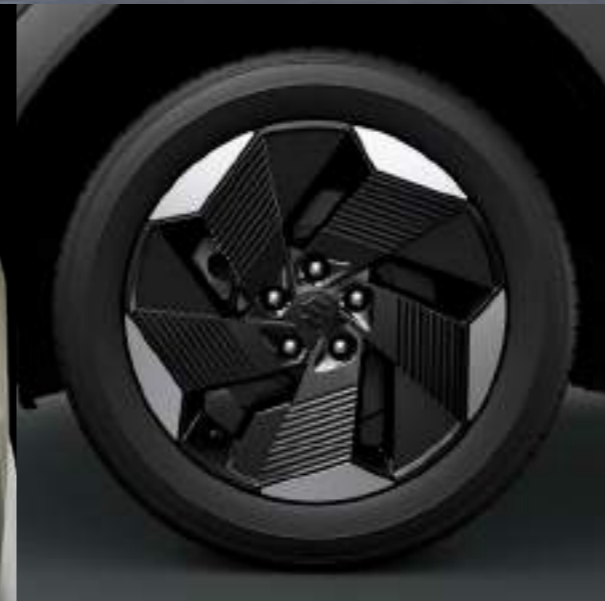
The eAxle is an electric drive unit integrating the motor, inverter, and reduction gears, performing the core functions traditionally handled by an internal combustion engine and transmission.

By combining the motor and inverter into a single unit, system efficiency is enhanced through reduced electrical wiring complexity. Its compact yet powerful design, achieved through a small-diameter motor and elongated shaft which supports a comfortable interior layout while delivering confident torque.



# The Evolution of an Icon

- 1 Iconic 3-Point Lamp Matrix**  
Advanced tri-element lighting architecture creates a distinctive visual signature. Precision-engineered modules with unique geometric forms integrate seamlessly, delivering a commanding presence that merges cutting-edge tech with iconic design.
- 2 Alloy Wheels**  
Large-diameter alloy wheels feature innovative geometry with a new spoke design and all-new resin garnish. This advanced engineering optimizes strength-to-weight ratio and enhances aerodynamics, combining performance with sculptural elegance for a commanding road presence.
- 3 Futuristic Front Look**  
The front grille features a signature design crafted from plant-derived, eco-conscious bio-engineering plastic, finished in a textured piano black surface creating a refined, modern presence that reflects both innovation and responsibility.



Front & Rear LED Matrix Lamps

Alloy Wheel 18'

Futuristic Front Look



## **INTERIOR**

PREMIUM COMFORT WITH ADVANCED TECHNOLOGY



# ULTIMATE COMFORT



10-Way Power-Adjustable Driver Seat

- 1-2 Cushion Tilt
- 3-4 Seat Slide
- 5-6 Seat Lifter
- 7-8 Reclining
- 9-10 Lumbar Support



Floating Centre Console



6 Speakers with Infinity Premium Sound System + Subwoofer



Wireless Charger



Custom Ambient Lighting



Squiracle Steering Wheel



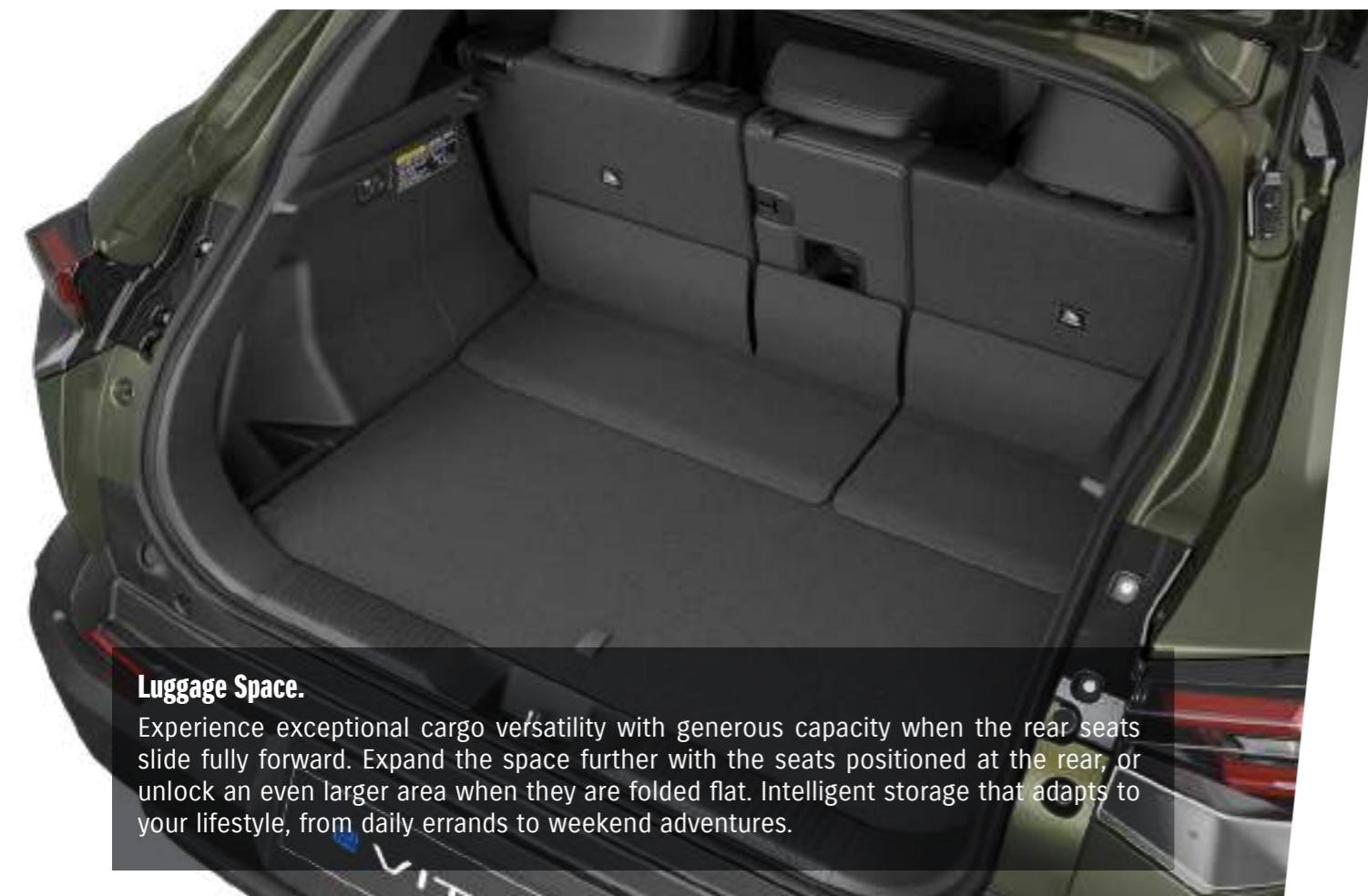
Panoramic Glass Roof



Front Center USB Port (Type A & C)



Rear Passenger USB Port (Type A & C)



## Utility, Refined for Maximum Ease



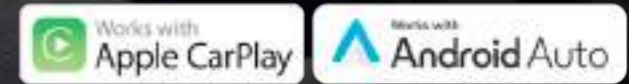
Ultimate flexibility with 160mm sliding range across 10 positions (16mm increments) and 10 reclining angles (2-degree steps). The versatile 4:2:4 configuration carries longer items while maintaining four-passenger comfort. First-class adaptability for every journey.

### Luggage Space.

Experience exceptional cargo versatility with generous capacity when the rear seats slide fully forward. Expand the space further with the seats positioned at the rear, or unlock an even larger area when they are folded flat. Intelligent storage that adapts to your lifestyle, from daily errands to weekend adventures.



# INTEGRATED DISPLAY SYSTEM



Air Conditioner Control

EV Setting

Display Customisation

**SELF-ASSURED. SMART. SUSTAINABLE.**

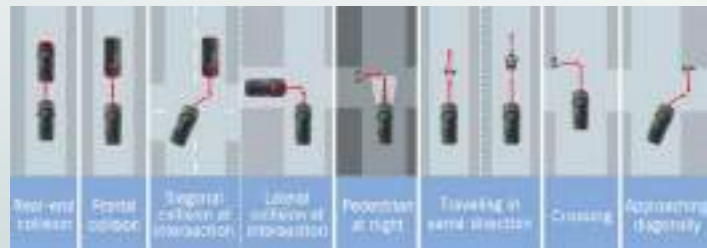


# SUZUKI

# Safety Support

## Preventive safety technology

### Dual Sensor Brake Support II (DSBS II)



The system employs millimetre-wave radar sensors and a monocular camera to detect vehicles, motorcycle pedestrians and bicycles (daytime only) ahead of the e VITARA. Audio and visual warnings are issued to alert you if the possibility of a collision arises. If you respond with insufficient brake force, brake assist automatically engages to help slow the vehicle. And if the probability of a collision increases, brake force is applied automatically to help reduce impact force and mitigate damage.

### Multiple Collision Braking



When the brake system receives a signal from the airbag that collision has occurred, it automatically activates the brakes and brake lamps to alert nearby vehicles and help prevent a secondary collision.

### Lane Keep Assist (LKA)



When you have adaptive cruise control activated, LKA helps you keep the e VITARA in the centre of the lane in which you are travelling. And if it sense that you drawing too close to an adjacent vehicle or other obstacle, LKA provides steering assistance to help maintain a safe distance.

### Lane Departure Prevention (LDP)



LDP detects the lane demarcation lines and predicts your path of travel as you drive. If you begin to drift due to inattention, the system alerts you by vibrating the steering wheel or sounding an audio alert. And if you fail to respond or correct, it provides steering assistance to help return your e VITARA to the centre of the lane.

### Blind Spot Monitor (BSM)

BSM uses millimetre-wave radar sensors in the rear bumper to detect vehicles located in or approaching either rear blind spot. When a vehicle is detected, a warning icon appears in the corresponding door mirror. If you activate the turn signal on that side, the icon flashes and an audio warning sounds.



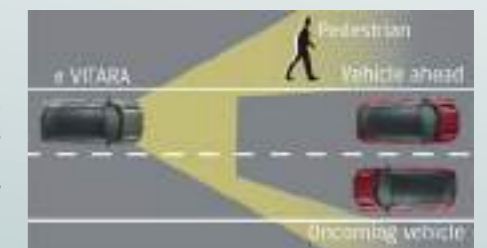
### Adaptive Cruise Control (ACC)

ACC helps reduce driver fatigue on long trips and when driving in traffic. The system uses millimetre-wave radar and a monocular camera to measure the distance to the vehicle ahead, accelerating or decelerating as needed to maintain the distance you have set. (You can choose from four distance settings.) If the road ahead is clear, it will maintain the speed at which you were travelling when you engaged the system. ACC can be linked to the traffic sign recognition system through the driver customisation setting. ACC set speed will be adjusted based on the posted speed limit.



### Adaptive High Beam System (AHS)

AHS uses millimetre-wave radar and the monocular camera to detect the brightness of the surrounding area and the lights of other vehicles, and adjusts the brightness and illumination range of the headlamps as needed. It also adjusts high beam brightness and illumination angle according to vehicle speed, and switches to low beam in well-lit areas.



### Rear Crossing Traffic Alert (RCTA)

RCTA is a supplementary safety feature that uses blind spot monitor to detect and warn of vehicles approaching from the left or right when backing out of a parking space or other location.



# WHERE COLOR MEETS CHARACTER



## COLOR VARIANTS



Land Breeze Green Pearl Metallic + Bluish Black Pearl



Arctic White Pearl + Bluish Black Pearl

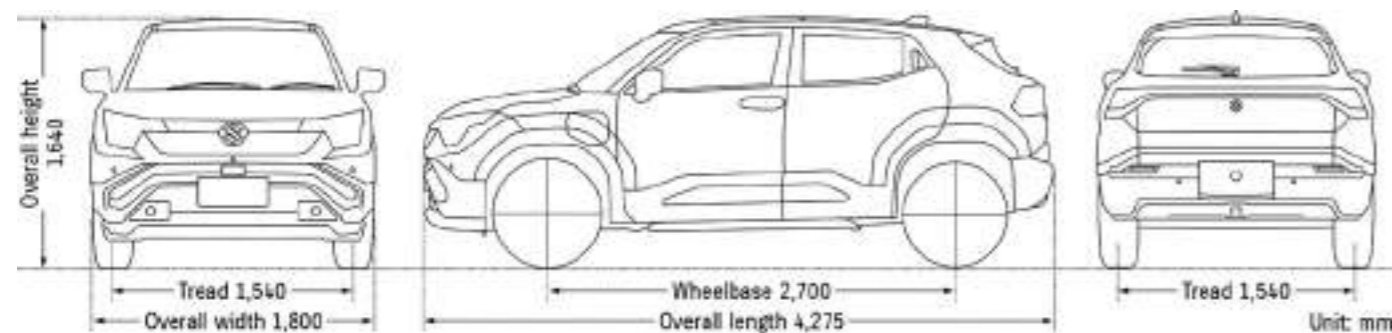


Bluish Black Pearl

Note:  
Color options and vehicle models shown are for illustration purposes only. Actual colors and specifications may vary and may not fully represent the complete vehicle details.

# SPECIFICATIONS

EV POWERTRAIN		
Battery Capacity	kWh	61
Drive System		2WD
Driving range (WLTP)*2	Combined km	426
Maximum output	kW	128
Maximum torque	Nm	193
DIMENSIONS		
Overall Length	mm	4.275
Overall Width	mm	1.800
Overall Height	mm	1.640
Wheelbase	mm	2.700
Front Tread	mm	1.540
Rear Tread	mm	1.540
Minimum Turning Radius	mm	5.800
Minimum Ground Clearance	mm	185
CAPACITIES		
Seating Capacity		5 persons
TRANSMISSION		
Type		Single Speed Electric Drive
CHASSIS & SUSPENSION		
Steering		Rack & Pinion
Brakes	Front	Ventilated Disc
	Rear	Ventilated Disc
Suspension	Front	MacPherson Strut
	Rear	Multi Link
WEIGHT OF VEHICLE		
Gross Vehicle Weight	kg	2.250



# EQUIPMENT

CHASSIS		
Tyres and Wheels	225/55R18 Alloy Wheels	Clear-finish Machined
Spare Tyre and Wheel	18 Inch Alloy Wheel	Standard Tyre
EXTERIOR		
Front and Rear Bumper	Body Color + Black	•
Front Grille	Piano Black	•
Wheelarch Extensions	Black	•
Tailgate Garnish	Body Color	•
Rear End Spoiler	Roof Color	•
Side Mouldings	Black	•
Tailgate Opener	Electromagnetic Type	•
Outside Door Handles	Body Color	•
VISIBILITY		
Headlamps	LED	•
	with Follow Me Home System and Lead to Vehicle Lamp	•
	Auto Head Light	•
Headlamps Leveling		Auto
Daytime Running Lamp (DRL)	LED	•
Fog Lamps	LED	•
Wipers	Front: 2-speed (low high) + Adjustable sensitivity + Washer	•
	Rear: 1-speed + Intermittent + Washer	•
Automatic Wiper	Rain Sensor	•
Rear Window Demister		•
Outside Door Mirrors	Body Color	•
	Mirror Heaters	•
	Electrical Adjust	•
	Electric Fold (Linked with Keyless Entry)	Auto
	with Built-in Turn Signal Lamp	•
Day / Night Rear View Mirror	Auto Dimming	•
STEERING AND INSTRUMENT PANEL		
2-Spoke Steering Wheel	Synthetic Leather Covered	•
	Tilt & Telescopic-Adjust	•
	With Audio Control	•
	With Adaptive Cruise Control (ACC)	•
	Voice Recognition	•
	Lane Keep Assist (LKA)	•
	Information display	•
Power Steering	Electric Power Steering (EPS)	•
Integrated Display System (IDS)	10.25-inch Meter Display & 10.1-inch Centre Display	•
REMINDER		
Adaptive High Beam System Warning	Lamp	•
Light-Off Warning Buzzer		•
Power Off Warning Buzzer		•
Low Battery Warning		•
Door Ajar Warning Lamp		•
Driver's and Passenger Seatbelt Reminder	Lamp & Alarm	•
Rear Seatbelt Reminder	Lamp & Alarm	•
Parking Brake Reminder		•

# EQUIPMENT

## SEATS

Front Seats	Power Seat with 10-way Adjustment (Driver's Side)	•
	Seat Height Adjuster (Driver's Side)	•
	Seat Slide and Reclining (Driver & Passenger Side)	•
	Cushion Tilt (Driver's Side)	•
	Lumbar Support (Driver's Side)	•
Rear Seats	Seat Back Pocket (Passenger Side)	•
	4:2:4 Split Rear Seatback (Single-fold)	•
	Seat Sliding (with Luggage Room Slide Board)	•
	Seat Reclining	•
	Rear Centre Armrest (with Cup Holder x2)	•
	Headrest (Side), Saddle (Centre)	•
Seat Upholstery Material	Fabric & Synthetic Leather	•
Heated Seats	Driver & Passenger's Side	•

## DRIVING AMENITIES

Electric Windows	Front & Rear	Auto
Central Door Locking	Switch on Driver's Side	•
Remote-Controlled Door Locks	with Hazard Lamp and Outside Buzzer Answerback Function	•
Keyless Push Start System		•
Shift Dial		•
Driving Mode		ECO --> NORMAL --> SPORT
Snow Mode		•
Easy Operation Pedal Mode		•
Air Conditioner	Automatic (Single Zone)	•
	Heater	•
	Pollen Filter	•
Audio	Shark Fin Antenna	•
	Front & Rear Speakers	6
	Subwoofer	•
	Infinity Premium Sound System	•
	Center Display Audio	10.1"
Panoramic Roof	with Sunshade	•

## INTERIOR

Cabin Lights	Front Map Lamp (3-position)	•
	Cabin Lamp (3-position)	•
	Glove Box Light	•
	Footwell Light (Front Seat)	•
	Ambient Light (12 colours)	•
	Luggage Room Lamp	•
Sun Visors	Driver's Side with Ticket Holder & Vanity Mirror	•
	Passenger's Side with Ticket Holder & Vanity Mirror	•
Assist Grips	Passenger x1 & Rear x2	•
Bottle Holders	Front x2 & Rear x2	•
Centre Console	Console Middle Tray	•
	Console Box with Armrest	•
	Cup Holder x2	•
Luggage Room	Parcel Shelf	•
	Luggage Board	•
	Luggage Box	•
	Shopping Bag Hook x1	•
USB Port	Front: Type A for Integrated Display System, Type C for Charging	•
	Rear: Type A and Type C for Charging	•
12V Accessory Socket	Centre Console	•
Wireless Charger		•

## SAFETY AND SECURITY COMPATIBILITY

Electronic Parking Brake		•
Airbags	7 Airbags - Front, Passenger, Side, Curtain, Knee	•
Seatbelts	Front: 3-Point ELR Seatbelts x 2 with Pretensioners, Force Limiters & Shoulder Height Adjuster	•
	Rear: 3-Point ELR Seatbelts x 3 with Pretensioners & Force Limiters (Side x2)	•
Occupant Detection		•
Child	ISOFIX Lower Anchorage x 2	•
	ISOFIX Top Tether Anchorage x 2	•
	Childproof Rear Door Locks	•
Immobilizer		•
Brake Assist Function		•
Security Alarm	Door & Hood	•
Impact Sensing Door Unlock System		•
ABS with EBD Function		•
Side Impact Door Beams	Front & Rear	•
High-Mount Stop Lamp	LED	•
Acoustic Vehicle Alerting System (AVAS)	W/O Deactivation Switch	•

## SUZUKI SAFETY SUPPORT

Dual Sensor Brake Support II (DSBS II)		•
Adaptive Cruise Control (ACC)		•
Lane Keep Assist (LKA)		•
Lane Departure Prevention (LDP)		•
Blind Spot Monitor (BSM)		•
Rear Crossing Traffic Alert (RCTA)		•
360o View Camera		•
Adaptive High Beam System (AHS)		•
Multiple Collision Braking		•
Emergency Stop Signal		•
Parking Sensors	Front & Rear	•
ESP****		•
Hill Hold Control		•

\*\*\*\*ESP® adalah merek dagang yang terdaftar untuk Daimler AG. ESP® didesain untuk membantu e VITARA agar mudah dikendalikan. Tetapi, efektivitasnya tergantung oleh kondisi berkendara dan keadaan permukaan jalan. Jika ban melewati limit cengkraman dan roda mulai berputar atau tergelincir, efektivitasnya mungkin berkurang.

### Catatan:

Spesifikasi, fitur, harga, dan ketersediaan model dapat berbeda dari yang tertera dan berubah sewaktu-waktu. Selalu konsultasikan dengan dealer resmi Suzuki atau kunjungi [www.suzuki.co.id](http://www.suzuki.co.id) untuk detail terbaru semua model.

# SUZUKI

## GENUINE ACCESSORIES

### @ VITARA



## EXTERIOR AND INTERIOR ACCESSORIES

SIDE UNDER GARNISH\*



WHEEL LOCK NUT SET\*



DOOR HANDLE POCKET PROTECTOR FILM\*



FLOOR MAT TRAY\*



ALLOY WHEEL GARNISH 18" SATIN SILVER\*



SIDE SILL SCUFF\*



MULTI ROOF RACK\*



BACK DOOR SCUFF PLATE\*



ANTI PM2.5 AIR-CONDITIONER FILTER\*



LUGGAGE MAT TRAY\*



TOUCH UP PAINT\*



mySUZUKI  
Solusi Belanja  
Spare Part Online



Scan Here!

\*Aksesori tersedia berdasarkan sistem pemesanan (made-to-order) melalui dealer resmi Suzuki.



## Benefit *My* SUZUKI

Download on the  
**App Store**

GET IT ON  
**Google Play**



### Booking Charging

Kemudahan reservasi pengisian daya di Dealer Resmi Suzuki.



### EV Point

Akses lokasi pengisian daya terdekat di Dealer Suzuki dan SPKLU.



### Booking Service

Atur jadwal servis kendaraan sesuai kenyamanan Anda.



### Vehicle Tracking

Pantau progres pengerjaan kendaraan secara real-time.



### Genuine Parts

Suku cadang asli Suzuki dengan kualitas dan garansi resmi.



### Find Dealer

Temukan Dealer Resmi Suzuki terdekat dengan cepat.

## SERVIS GRATIS

(Jasa & Part\*) HINGGA 50.000 km / 30 BULAN

\*Untuk info lebih lanjut, hubungi dealer Suzuki Pembelian.

